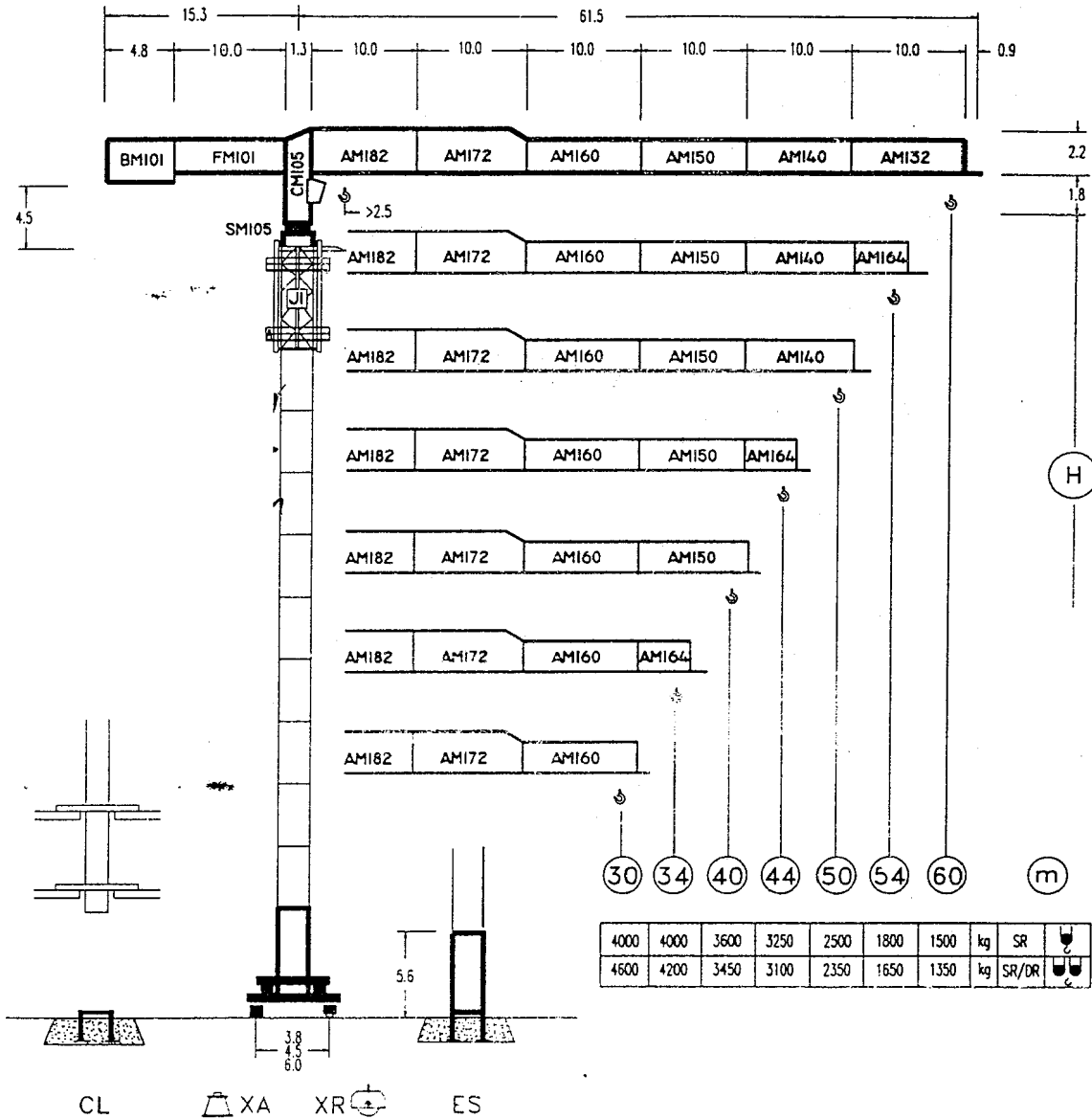




COMANSA

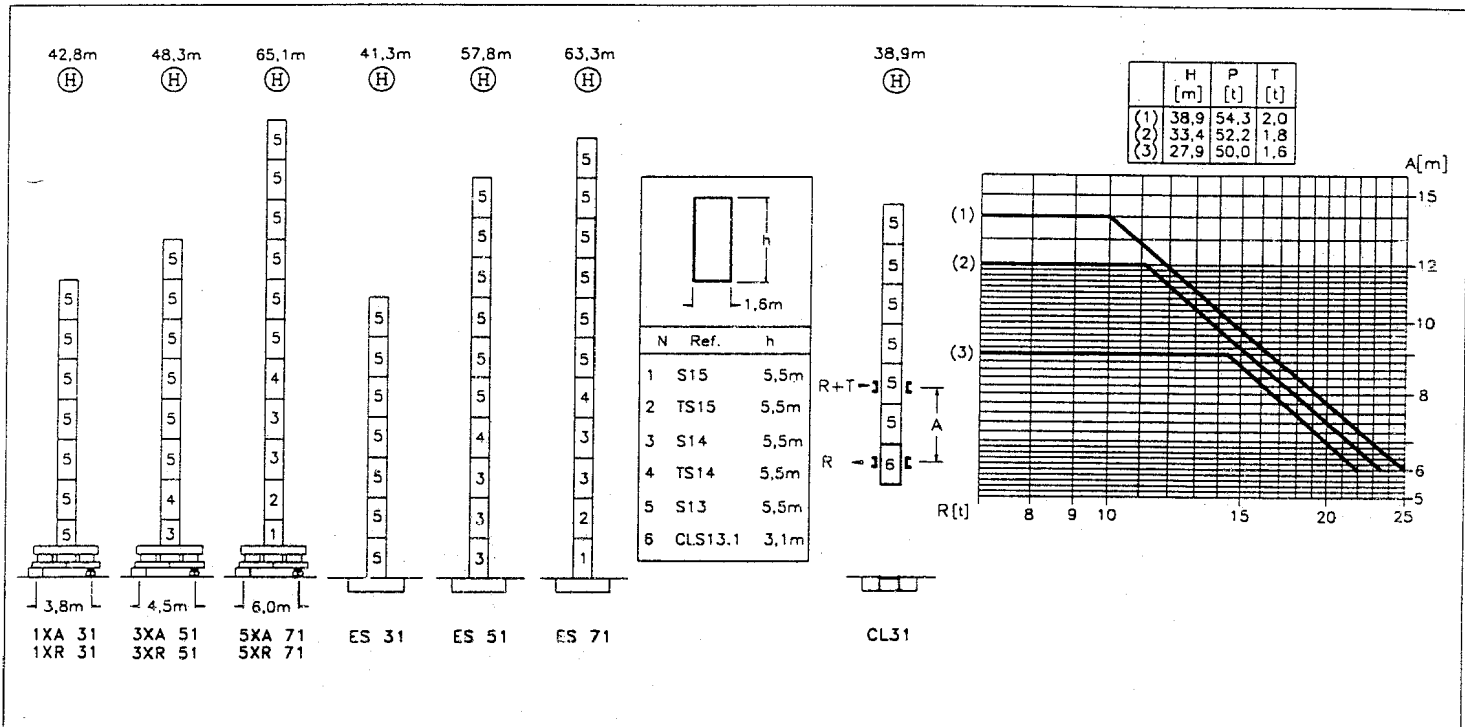
LC-1060

8 t



CE
DIN15018 H1B3

(R)		R _(Cmax)	C _{max}	25	30	34	40	44	50	54	60
(60)	SR	26.4	4000	4000	3460	3000	2475	2210	1890	1715	1500
	SR/DR	14.1	8000	4145	3340	2865	2340	2070	1745	1570	1350
(54)	SR	27.5	4000	4000	3615	3130	2590	2310	1980	1800	
	SR/DR	14.6	8000	4325	3485	2995	2450	2170	1830	1650	
(50)	SR	33.3	4000	4000	4000	3900	3240	2905	2500		
	SR/DR	17.6	8000	5375	4355	3765	3100	2760	2350		
(44)	SR	35.7	4000	4000	4000	4000	3515	3150			
	SR/DR	18.8	8000	5805	4715	4080	3365	3000			
(40)	SR	36.0	4000	4000	4000	4000	3550				
	SR/DR	18.9	8000	5860	4760	4120	3400				
(34)	SR	34.0	4000	4000	4000	4000					
	SR/DR	19.3	8000	5970	4850	4200					
(30)	SR	30.0	4000	4000	4000						
	SR/DR	19.2	8000	5970	4850						



CS3-3.7
3.7 kW

10 m/mn
33 m/mn
66 m/mn

GR-6.5
2 x 65 Nm

0 ⇄ 0.14
0.14 ⇄ 0.35
0.35 ⇄ 0.7 rpm

TS2-5.5 *TS2-5.5VC	TRA-6.5 *TRA-6.5VC
2 x 55 Nm	2 x 65 Nm
1XR 31 3XR 51	5XR 71
0 ⇄ 20 m/mn	0 ⇄ 20 m/mn

ES3-25-20
25 kW

		I	II	III
SR	m/min	7	28	56
	t	4	4	2
DR	m/min	3,5	14	28
	t	8	8	4

***CFU-4.0**
4 kW

0 ⇄ 70 m/mn

***EFU2-24-20**
24 kW

	t	I	II	III
SR	m/min	9	36	72
	t	4	4	2
DR	m/min	4,5	18	36
	t	8	8	4

***ES3-33-20**
33 kW

	t	I	II	III
SR	m/min	9	36	72
	t	4	4	2
DR	m/min	4,5	18	36
	t	8	8	4

Tensión de alimentación Operating voltage Tension de service Betriebsspannung	380 V 3 ph 50 Hz
Sección de cable Cross section of cable Section du câble Kabelquerschnitt	4 x 35 mm²

OPCIONAL
OPTIONAL
EN OPTION
KAUFOPTION

R. máx.	En servicio In operation	1XR31 72,7 t
	En service In Betrieb	3XR51 66,8 t
		5XR71 80,2 t
R. máx.	Fuera de servicio Out of service	1XR31 87,1 t
	Hors service Ausser Betrieb	3XR51 93,4 t
		5XR71 125,8 t



Polígono Industrial de Areta
31620 Huarte-Pamplona (Navarra) ESPAÑA
Teléf. (9)48 - 33 50 20
Fax (9)48 - 33 08 10
Apartado Postal (P. O. Box) 1239
31080 Pamplona (Navarra) ESPAÑA