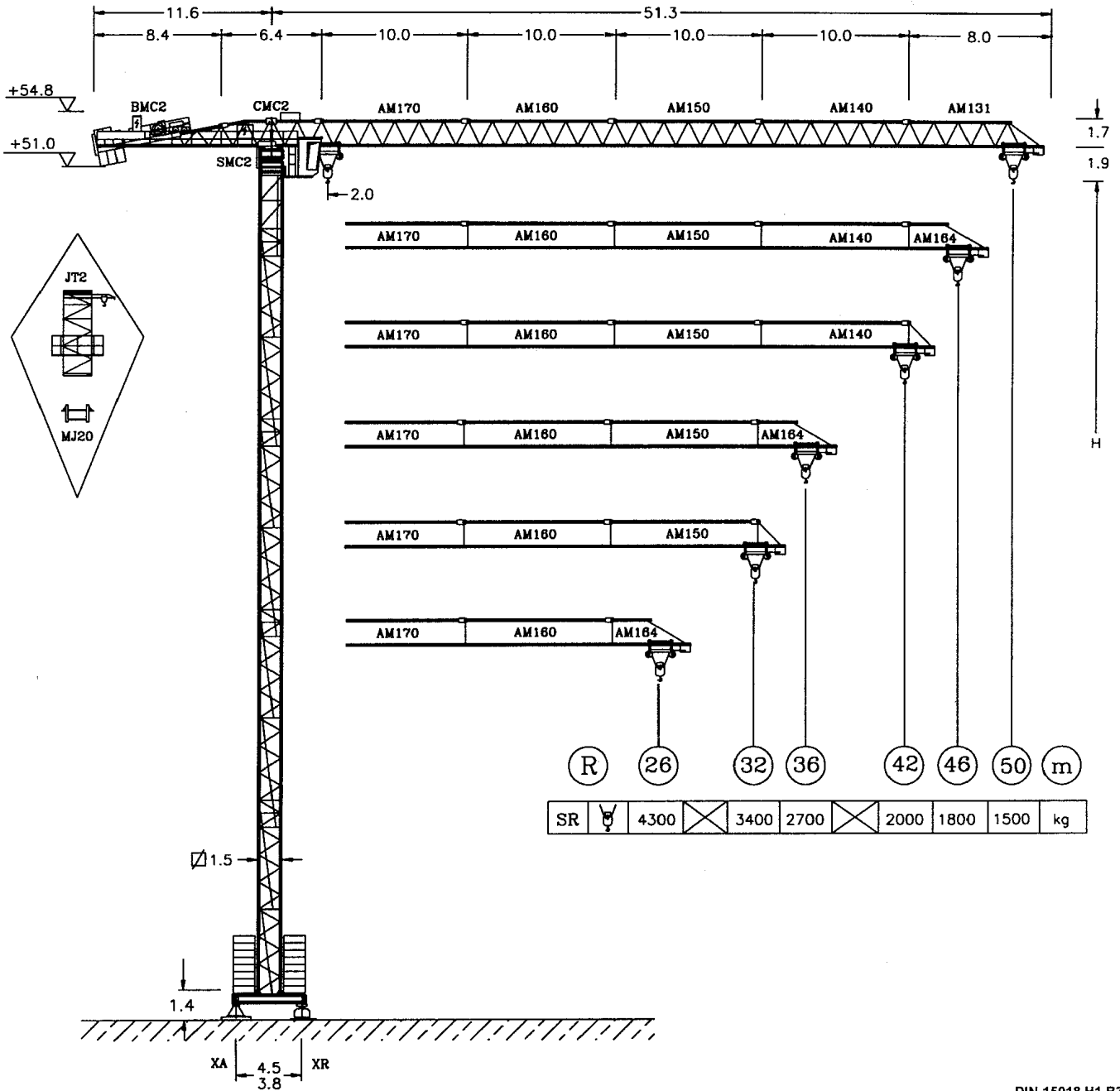




COMANSA

CC - 5015

6 t



DIN 15018 H1 B3

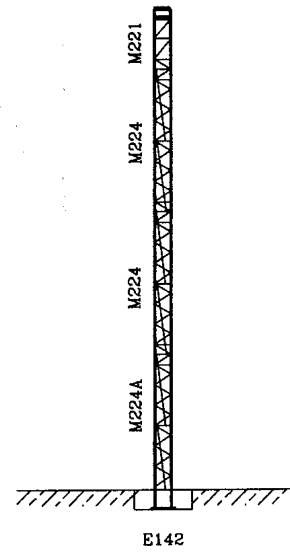
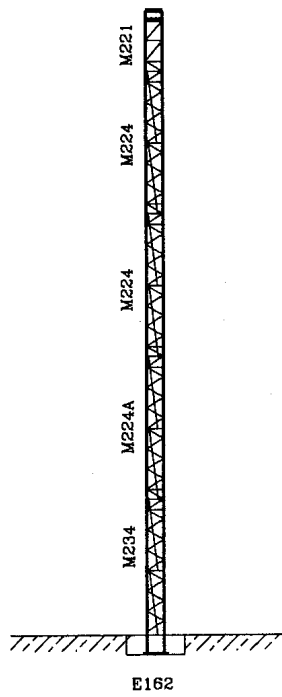
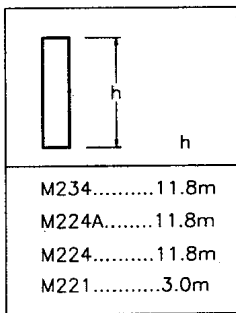
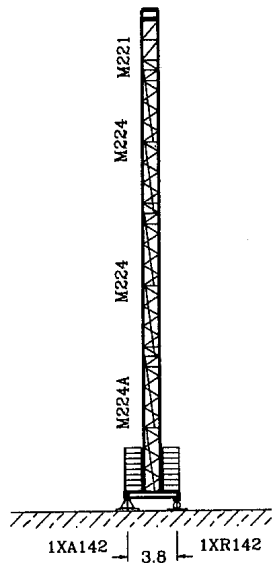
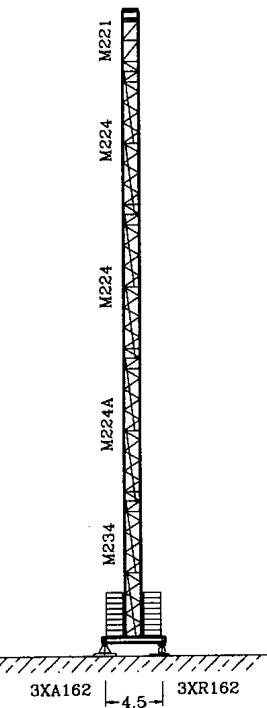
(R)	R _(Cmax)	C _{max}	17	20	23	26	32	36	42	46	50
(50)	15.65	6000	5460	4540	3865	3350	2620	2275	1880	1670	1500
(46)	16.54	6000	5820	4840	4125	3580	2810	2440	2020	1800	
(42)	16.43	6000	5775	4800	4095	3550	2785	2415	2000		
(36)	17.98	6000	6000	5320	4540	3950	3105	2700			
(32)	19.41	6000	6000	5805	4960	4315	3400				
(26)	19.35	6000	6000	5785	4940	4300					

H = 50,8 m

H = 49,5 m

H = 38,7 m

H = 37,7 m



CFUD-3.0

3 kW

0 ⇨ 50 m/mn	0 ⇨ 6 t
0 ⇨ 65 m/mn	0 ⇨ 4 t

GR-5.0

2 x 50 Nm

0 ⇨ 0.14	rpm
0.14 ⇨ 0.35	
0.35 ⇨ 0.7	

TS2-5.5 *TS2-5.5VC

2 x 55 Nm

0 ⇨ 20 m/mn

EFU4-28-30

28 kW

kg	6000
	5000
	4000
	3000
	2000
	1000
	1200
	90m/mn

Tensión de alimentación Operating voltage Tension de service Betriebsspannung	380 V 3 ph 50 Hz
--	---

Sección de cable Cross section of cable Section du câble Kabelquerschnitt	4 x 25 mm²
--	------------------------------

OPCIONAL
OPTIONAL
EN OPTION
KAUFOPTION

R. máx.	En servicio In operation En service In Betrieb	3XA162 61,3 t 1XA142 52,0 t
----------------	---	--

R. máx.	Fuera de servicio Out of service Hors service Ausser Betrieb	3XA162 102,0 t 1XA142 71,2 t
----------------	---	---